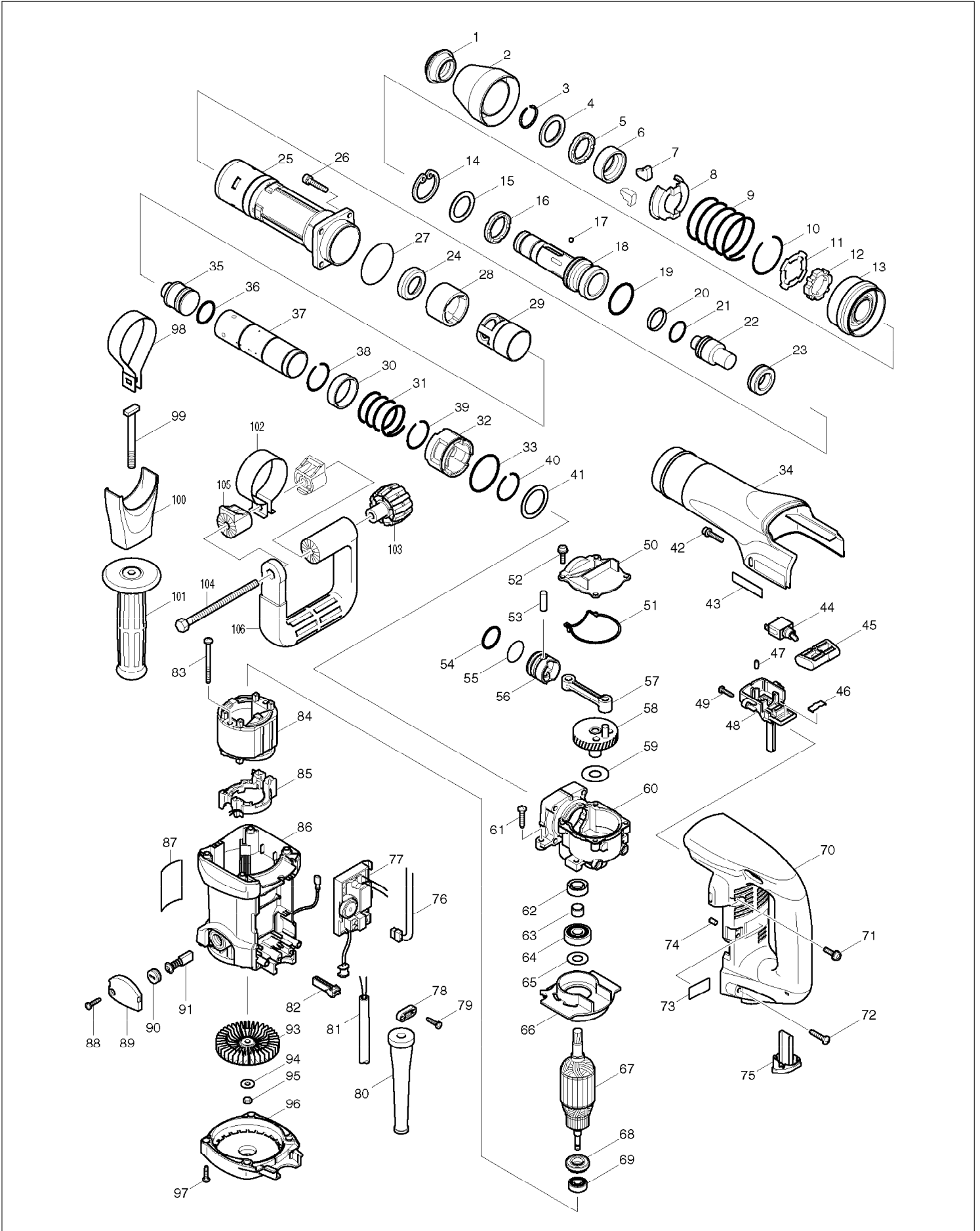


# SERVICE DRAWING

MODEL NO. HM0860C



# SPARE PARTS LIST

MODEL NO. HM0860C

| ITEM | PART NO. | DESCRIPTION                    | QTY | NOTE  |
|------|----------|--------------------------------|-----|-------|
| 001  | 286269-2 | TOOL HOLDER CAP                | 1   |       |
| 002  | 418351-1 | CHUCK COVER                    | 1   |       |
| 003  | 231984-3 | RING SPRING 25                 | 1   |       |
| 004  | 267272-2 | FLAT WASHER 28                 | 1   |       |
| 005  | 262110-3 | URETHAN RING 28                | 1   |       |
| 006  | 331659-5 | CHUCK RING                     | 1   |       |
| 007  | 310108-5 | TOOL RETAINER                  | 2   |       |
| 008  | 345360-6 | SPRING GUIDE                   | 1   |       |
| 009  | 233387-7 | COMPRESSION SPRING 52          | 1   |       |
| 010  | 233928-9 | RING SPRING 50                 | 1   |       |
| 011  | 345371-1 | PLATE                          | 1   |       |
| 012  | 310145-9 | LOCK RING                      | 1   |       |
| 013  | 418357-9 | CHANGE RING                    | 1   |       |
| 014  | 962211-4 | RETAINING RING R-42            | 1   |       |
| 015  | 267273-0 | FLAT WASHER 29                 | 1   |       |
| 016  | 262110-3 | URETHAN RING 28                | 1   |       |
| 017  | 216002-8 | STEEL BALL 4.8                 | 4   |       |
| 018  | 324387-9 | TOOL HOLDER                    | 1   |       |
| 019  | 213527-3 | O RING 38                      | 1   |       |
| 020  | 213431-6 | FLUORIDE RING 28               | 1   |       |
| 021  | 213394-6 | O RING 23                      | 1   |       |
| 022  | 324389-5 | IMPACT BOLT                    | 1   |       |
| 023  | 421852-0 | RUBBER RING 20                 | 1   |       |
| 024  | 267780-3 | CUP WASHER 23                  | 1   |       |
| 025  | *****    | *****                          | *** | ***** |
| 026  | 922351-0 | HEX. SOCKET HEAD BOLT M6X30    | 4   |       |
| 027  | 213656-2 | O RING 53                      | 1   |       |
| 028  | *****    | *****                          | *** | ***** |
| 029  | *****    | *****                          | *** | ***** |
| 030  | 331660-0 | RING 36                        | 1   |       |
| 031  | 233386-9 | COMPRESSION SPRING 37          | 1   |       |
| 032  | 317719-7 | CYLINDER GUIDE                 | 1   |       |
| 033  | 213611-4 | O RING 46                      | 1   |       |
| 034  | 183719-7 | CRANK HOUSING COVER<br>INC. 43 | 1   |       |
| 035  | 324388-7 | STRIKER                        | 1   |       |
| 036  | 213958-6 | O RING 24                      | 1   |       |
| 037  | 331658-7 | CYLINDER 32                    | 1   |       |
| 038  | 233927-1 | RING SPRING 34                 | 1   |       |
| 039  | 233927-1 | RING SPRING 34                 | 1   |       |
| 040  | 233927-1 | RING SPRING 34                 | 1   |       |
| 041  | 267079-6 | FLAT WASHER 34                 | 1   |       |
| 042  | 922243-3 | HEX. SOCKET HEAD BOLT M5X25    | 1   |       |
| 043  | 819063-3 | MAKITA LABEL                   | 2   |       |
| 044  | 651423-1 | SWITCH                         | 1   |       |
| 045  | 418360-0 | SWITCH LEVER                   | 1   |       |
| 046  | 232209-8 | LEAF SPRING                    | 1   |       |
| 047  | 263027-3 | RUBBER PIN 4                   | 1   |       |
| 048  | 418361-8 | SWITCH BOX                     | 1   |       |
| 049  | 265995-6 | TAPPING SCREW 4X18             | 2   |       |
| 050  | 418358-7 | CRANK CAP                      | 1   |       |
| 051  | 421851-2 | SEAL RING                      | 1   |       |
| 052  | 911233-1 | PAN HEAD SCREW M5X20           | 4   |       |
| 053  | 268104-6 | PIN 8                          | 1   |       |
| 054  | 213958-6 | O RING 24                      | 1   |       |
| 055  | 213432-4 | O RING 26                      | 1   |       |
| 056  | 418349-8 | PISTON                         | 1   |       |
| 057  | 418350-3 | CONNECTING ROD                 | 1   |       |
| 058  | 153676-3 | CRANK SHAFT COMPLETE           | 1   |       |
| 059  | 267166-1 | FLAT WASHER 14                 | 1   |       |
| 060  | 153678-9 | CRANK HOUSING COMPLETE         | 1   |       |

# SPARE PARTS LIST

MODEL NO. HM0860C

| ITEM | PART NO. | DESCRIPTION                           | QTY | NOTE  |
|------|----------|---------------------------------------|-----|-------|
| 061  | 266041-8 | TAPPING SCREW 5X25                    | 4   |       |
| 062  | 213231-4 | OIL SEAL 15                           | 1   |       |
| 063  | 331596-3 | SLEEVE 12                             | 1   |       |
| 064  | 211137-0 | BALL BEARING 6201LLU                  | 1   |       |
| 065  | 253759-0 | FLAT WASHER 12                        | 1   |       |
| 066  | 418355-3 | BAFFLE PLATE                          | 1   |       |
| 067  | 513563-2 | ARMATURE ASS'Y 220-240V<br>INC. 68,69 | 1   |       |
| 068  | 681650-6 | INSULATION WASHER                     | 1   |       |
| 069  | 210005-4 | BALL BEARING 608DDW                   | 1   |       |
| 070  | 418366-8 | HANDLE                                | 1   |       |
| 071  | 911233-1 | PAN HEAD SCREW M5X20                  | 2   |       |
| 072  | 266041-8 | TAPPING SCREW 5X25                    | 2   |       |
| 073  | 815954-6 | HM0860C SERIAL NO.LABEL               | 1   |       |
| 074  | 416285-2 | ACRYLIC PIN 5                         | 2   |       |
| 075  | 418359-5 | HANDLE CAP                            | 1   |       |
| 076  | 638294-3 | LEAD UNIT                             | 1   |       |
| 077  | 631554-2 | CONTROLLER                            | 1   |       |
| 078  | 687053-2 | STRAIN RELIEF                         | 1   |       |
| 079  | 265995-6 | TAPPING SCREW 4X18                    | 2   |       |
| 080  | 682560-0 | CORD GUARD 10                         | 1   |       |
| 081  | 695123-3 | POWER SUPPLY CORD 1.5-2-4.0           | 1   |       |
| 082  | 418353-7 | FIX ROD                               | 1   |       |
| 083  | 266044-2 | TAPPING SCREW 5X60                    | 2   |       |
| 084  | 634508-8 | FIELD 220-240V                        | 1   |       |
| 085  | 638293-5 | SUPPORT COMPLETE                      | 1   |       |
| 086  | 153677-1 | MOTOR HOUSING COMPLETE                | 1   |       |
| 087  | 850965-4 | NAME PLATE HM0860C                    | 1   |       |
| 088  | 265995-6 | TAPPING SCREW 4X18                    | 2   |       |
| 089  | 418362-6 | BRUSH HOLDER COVER                    | 2   |       |
| 090  | 643750-0 | BRUSH HOLDER CAP                      | 2   |       |
| 091  | *****    | *****                                 | *** | ***** |
| 093  | 135058-1 | FAN 76 ASS'Y                          | 1   |       |
| 094  | 253047-5 | FLAT WASHER 6                         | 1   |       |
| 095  | 931303-0 | HEX. NUT M6                           | 1   |       |
| 096  | 418354-5 | REAR COVER                            | 1   |       |
| 097  | 265995-6 | TAPPING SCREW 4X18                    | 4   |       |
| 098  | 345361-4 | GRIP SPRING 60                        | 1   |       |
| 099  | 266322-0 | SQUARE BOLT M8X80                     | 1   |       |
| 100  | 418363-4 | SIDE GRIP BASE 60                     | 1   |       |
| 101  | 152554-4 | GRIP 36 COMPLETE                      | 1   |       |
| A01  | 181573-3 | GREASE VESSEL 93G                     | 1   |       |
| A02  | 824708-0 | PLASTIC CARRYING CASE                 | 1   |       |