

freud

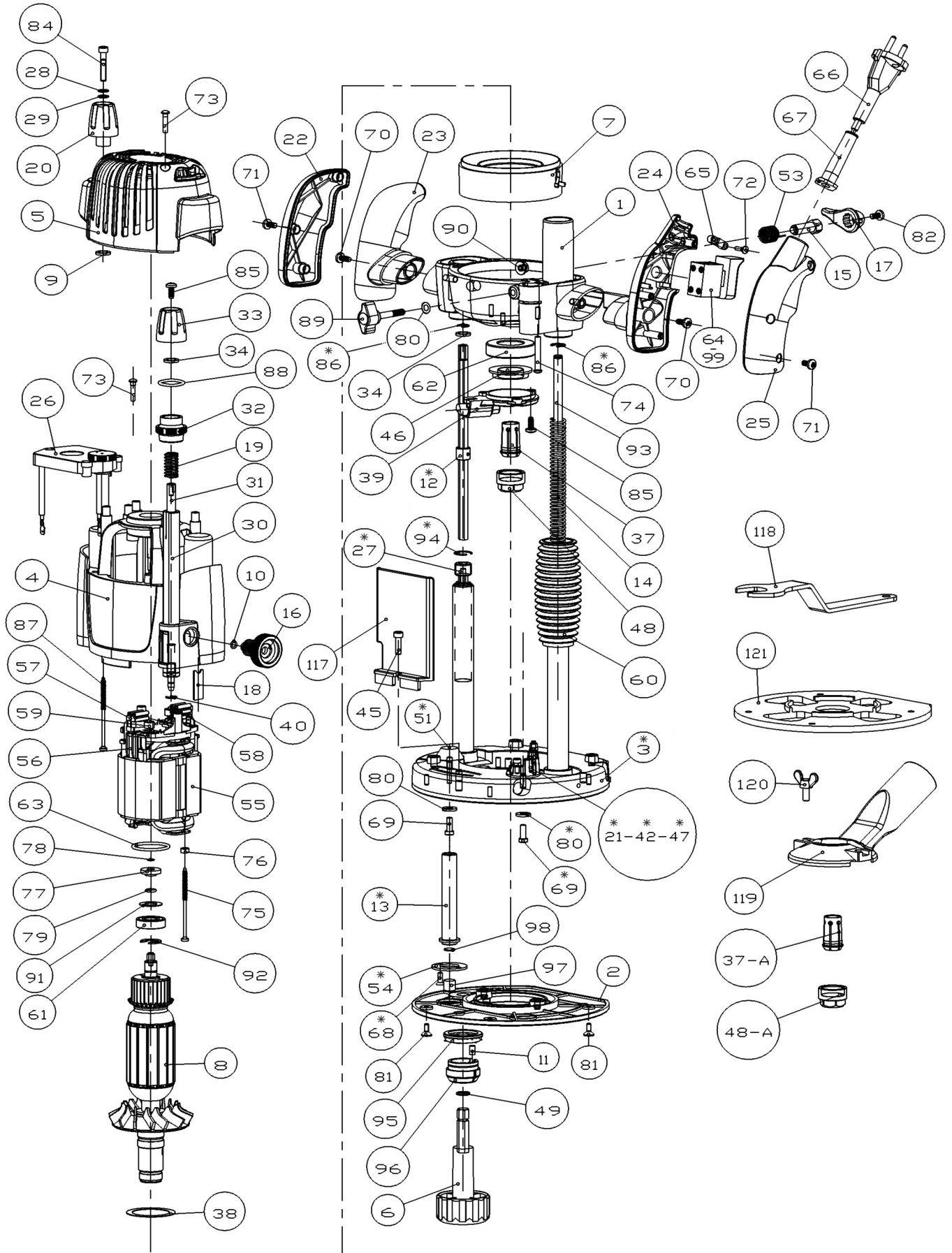
LISTA DE RECAMBIOS
SPARE LIST
LISTE DE RECHANGES

647

FRESADORA
PLUNGE ROUTER
DEFONCEUSE

VERSIÓN: V-0

FT3000VCE



LISTA DE RECAMBIOS / SPARE PART LIST / LISTE PIECES DETACHEES

VERSION: 0

POS	CODIGO	DENOMINACION	DESCRIPTION	DENOMINATION
1	136081082	Plato	Bottom motor housing	Plateau moteur
2A	136085533	Base baquelita EU, UK	Base plate EU, UK	Plaque base EU, UK
2B	136085532	Base baquelita USA, CAN	Base plate USA, CAN	Plaque base USA, CAN
3A	136089752	Base+columnas (incl.piezas*) EU, UK	Base (incl.parts marked by'*) EU, UK	Base (inclut pieces'*) EU, UK
3B	136089753	Base+columnas (incl.piez.*") USA,CAN	Base (incl.parts marked '*") USA, CAN	Base (incl.pieces'*) USA, CAN
4	136081031	Cubierta motor negra	Top motor housing	Carcasse moteur
5	136081069	Casquete cubierta motor rojo	Motor housing cap	Couvercle carcasse moteur
6	136085501	Pomo regulación	Above table adjustment knob	Poignée adapte tableau
7	136082611	Guia de aire	Air guide	Guide d'air
8A	136089033	Inducido 230V	Armature 230V	Induit 230V
8B	136089032	Inducido 120V (largo) USA, CAN	Armature 120V (long) USA, CAN	Induit 120V (longueur) USA, CAN
8C	136089031	Inducido 110V (corto) UK	Armature 110V (short) UK	Induit 110V (court) UK
9	130101603	Anillo goma	Ring	Anneau
10	742101320	Anillo junta OR 13x2	Rubber ring OR 13x2	Joint OR 13x2
11	136082881	Tope goma D5x9	Rubber stop	Stop gomme
12	136088941	Grupo tope regulación	Depth adjust hex rod	Groupe stop règlement
13	136085701	Soporte regulación	Depth adjust support shaft	Support règlement
14	757001101	Muelle columna	Spring	Ressort colonne
15	136086241	Tornillo fijar columna	Locking screw	Vis de blocage
16	136085632	Pomo dentado	Depth adjustment rod dial	Poignée découpé
17	136081231	Palanca bloqueo	Plunge lock handle	Levier blocage
18	136084911	Lengüeta retención	Depth adjustment rod dial support	Languette retenue
19	757001010	Muelle	Spring	Ressort
20	136085671	Pomo profundidad	Height adjustment knob	Poignée adapte profondeur
21	136089291	Grupo tope apoyo	4 Position step turret	Groupe stop 4 positions
22A	136081051	Tapa puño Izquierda negro EU, UK	L/Handle rubber outer grip EU, UK	Couver. poignée gauche EU, UK
22B	136081050	Tapa puño Izq. engomada USA, CAN	L/Handle rubber outer grip USA, CAN	Couv. poignée gauche USA, CAN
23	136081052	Cuerpo puño Izq. negro	L/Handle inner grip	Poignée gauche
24	136081042	Cuerpo puño derecha negro	R/Handle inner grip	Poignée droite
25A	136081041	Tapa puño derecha negro EU, UK	R/Handle rubber outer grip EU, UK	Couverture poignée droite EU, UK
25B	136081040	Tapa puño dcha engomada USA, CAN	R/Handle rubber outer grip USA, CAN	Couver. poignée droite USA, CAN
26A	763487126	Regulador 230V	Speed control module 230V	Regulateur 230V
26B	763488026	Regulador 120V	Speed control module 120V	Regulateur 120V
27	136086681	Dado M16	Threaded hex height adjuster	Vu M16
28	874110051	Arandela A5,1 DIN-6798	Lock washer A5,1 DIN 6798	Rondelle A5,1 DIN-6798
29	870001053	Arandela A5,3 DIN-125	Washer 5,3 DIN 125 (2)	Rondelle A5,3 DIN-125
30A	136083483	Eje cremallera "milímetros"	Depth adjustment rod "mm"	Axe crémaillère "millimètres"
30B	136083482	Eje cremallera "pulgadas"	Depth adjustment rod "inch"	Axe crémaillère "pouces"
31	136086132	Esparrago profundidad	Stop rod	Asperge profondeur
32A	136084945	Disco divisor "milímetros"	Micro adjustment depth scale "mm"	Disque divisor "millimètres"
32B	136084944	Disco divisor "pulgadas"	Micro adjustment depth scale "inch"	Disque divisor "pouces"
33	136084321	Pomo regulación	Depth rod micro adjustment knob	Poignée règlement
34	870810916	Arandela D9xD16x1	Washer D. 9x16x1 (4)	Rondelle D9xD16x1
37A	136027433	Pinza 8mm	8mm Collet	Pince 8mm
37B	136027432	Pinza 12mm	12mm Collet	Pince 12mm
37C	136027431	Pinza 1/2"	1/2" Collet	Pince 1/2"
37D	136027435	Pinza 1/4"	1/4" Collet	Pince 1/4"
38	870520250	Arandela 25x35x1 DIN-988	Washer 25x35x1 DIN 988 (2)	Rondelle 25x35x1 DIN-988
39	136068371	Grupo tapa rodamiento	Spindle lock button	Groupe couvre roulement
40	136083362	Anillo elastico D4,7x1	Retaining clip	Anneau élastique D4,7x1
42	713900233	Bola 6mm DIN-5401	Steel ball 6mm DIN5401	Boule 6mm DIN-5401
45	842009324	Tornillo M6x12 DIN-912	Screw M6x12 DIN 912	Vis M6x12 DIN-912
46	136061521	Tuerca fijar rodamiento	Bearing shaft nut	Ecrou
47	757000352	Muelle	Spring	Ressort
48	136037411	Tuerca pinza	Collet nut (2)	Ecrou pince
49	742100715	Anillo junta OR 7x1,5	Rubber ring OR 7x1,5	Joint OR 7x1,5

LISTA DE RECAMBIOS / SPARE PART LIST / LISTE PIECES DETACHEES

VERSION: 0

POS	CODIGO	DENOMINACION	DESCRIPTION	DENOMINATION
51	136084771	Tope Newblock	Auto Lock Cone	Limite Newblock
53	757021361	Muelle torsión izda.	Spring	Ressort
54	136081731	Tapa soporte	Depth adjust shaft cover	Couverture supporte
55A	136039023	Estator 230V	Field 230V	Stator 230V
55B	136039021	Estator 120V	Field 120V	Stator 120V
56	134159113	Portaescobillas	Brush holder	Porte balai
57	134139073	Escobilla 6x16	Motor brush auto	Balai 6x16
58	134139074	Escobilla 6x16 auto	Motor brush auto	Balai 6x16 auto
59	134132251	Muelle escobilla	Brush spring (2)	Ressort balai
60	136081551	Fuelle protector	Protective sleeve	Soufflet protection
61	712020120	Rodamiento 6201-2RS	Bearing 6201-2RS	Roulement 6201-2RS
62	712000535	Rodamiento 6005 doble lab.	Bearing 6005	Roulement 6005
63	742103225	Anillo junta OR 32x2,5	Upper bearing ring	Joint OR 32x2,5
64	763267006	Interruptor Rojo	Power switch	Interrupteur
65	114604231	Brida fijar cable	Cable clamp	Bride
66A	134104001	Cable red EU	Power cord EU	Cable prise courant EU
66B	767663600	Cable red USA	Power cord USA	Cable prise courant USA
66C	767673100	Cable red UK (230V)	Power cord UK (230V)	Cable prise courant UK (230V)
66D	767503200	Cable red UK (110V)	Power cord UK (110V)	Cable prise courant UK (110V)
67	134314181	Manguito	Power cord boot	Manchon
68	849078140	Tornillo torx M4x8	Screw torx M4x8 (2)	Vis torx M4x8
69	844315285	Tornillo torx M5x12	Screw torx M5x12 (2)	Vis torx M5x12
70	844315327	Tornillo torx M6x15	Screw torx M6x15 (2)	Vis torx M6x15
71	844820028	Tornillo torx TP 3,5x16	Screw torx 3,5x16 (6)	Vis torx TP 3,5x16
72	844820027	Tornillo torx TP 3,5x14	Screw torx 3,5x14 (2)	Vis torx TP 3,5x14
73	844820050	Tornillo torx TP 4x20	Screw torx 4x20 (5)	Vis torx TP 4x20
74	844830134	Tornillo torx TP 5x55	Screw torx 5x55 (4)	Vis torx TP 5x55
75	844820063	Tornillo torx TP 4x75	Screw torx 4x75 (2)	Vis torx TP 4x75
76	134161722	Anillo fijar estator	Armature lock ring (2)	Anneau fixe stator
77	763889161	Anillo tacométrico	Tachometer ring	Anneau tachometryque
78	874900060	Aranlock D.6	Tachometer ring retaining clip	Aranlock D.6
79	742100620	Anillo junta OR 6x2	Spacer	Joint OR 6x2
80	870810614	Arandela 6x14x2	Washer 6x14x2	Rondelle 6x14x2
81	847605324	Tornillo M6x12 DIN-965	Screw torx (5)	Vis M6x12 DIN-965
82	844315282	Tornillo torx M5x8	Screw torx M5x8	Vis torx M5x8
84	842009297	Tornillo M5x30 DIN-912	Screw M5x30 DIN 912	Vis M5x30 DIN-912
85	844315255	Tornillo torx M4x15	Screw torx M4x15 (4)	Vis torx M4x15
86	875401060	Anillo seguridad 6 DIN6799	Safety ring (2)	Anneau sécurité 6 DIN6799
87	844830139	Tornillo torx TP 5x80	Screw torx TP 5x80 (2)	Vis torx TP 5x80
88	742101915	Anillo junta 19x1,5	Rubber ring 19x1,5	Joint 19x1,5
89	136013978	Palomilla M6x35	Winged screw M6x35	Vis papillon M6x35
90	860400060	Tuerca M6 DIN-6923	Nut M6 DIN-6923	Ecrou M6 DIN-6923
91	870801227	Arandela 12x27x0,5	Washer 12x27x0,5	Rondelle 12x27x0,5
92	875401100	Anillo seguridad 10 DIN6799	Safety ring	Anneau sécurité 10 DIN6799
93	136085581	Varilla guía muelle	Spring guide rod	Tige guide ressort
94	136083361	Anillo seguridad 17,5x1	Safety ring	Anneau sécurité 17,5x1
95A	136084952	Anillo graduado "milímetros"	Micro adjustment wheel "mm"	Anneau gradué "millimètres"
95B	136084951	Anillo graduado "pulgadas"	Micro adjustment wheel "inch"	Anneau gradué "pouces"
96	136084961	Portaanillo graduado hex.M10	Up/down knob	Porte anneau gradué M10
97	136084611	Disco espuma	Dust protection foam	Disque protection poussière
98	136083181	Disco axial	Axial disc	Disque axial
99	138315001	Condensador 110V-230V	Condenser 110V-230V	Condensateur 110V-230V
117	136081212	Protección transparente	Chip guard	Protection transparente
118	136085211	Llave acodada 22mm	22mm bent wrench	Clé 22mm
119	919340000	Boquilla aspiración polvo	Vacuum adapter	Adaptateur extraction poussière
120	849190284	Tornillo M5x16 DIN-316	Screw M5x16 DIN 316	Vis M5x16 DIN-316
121	136085532	Base transparente	Transparent Base Plate	Base transparente