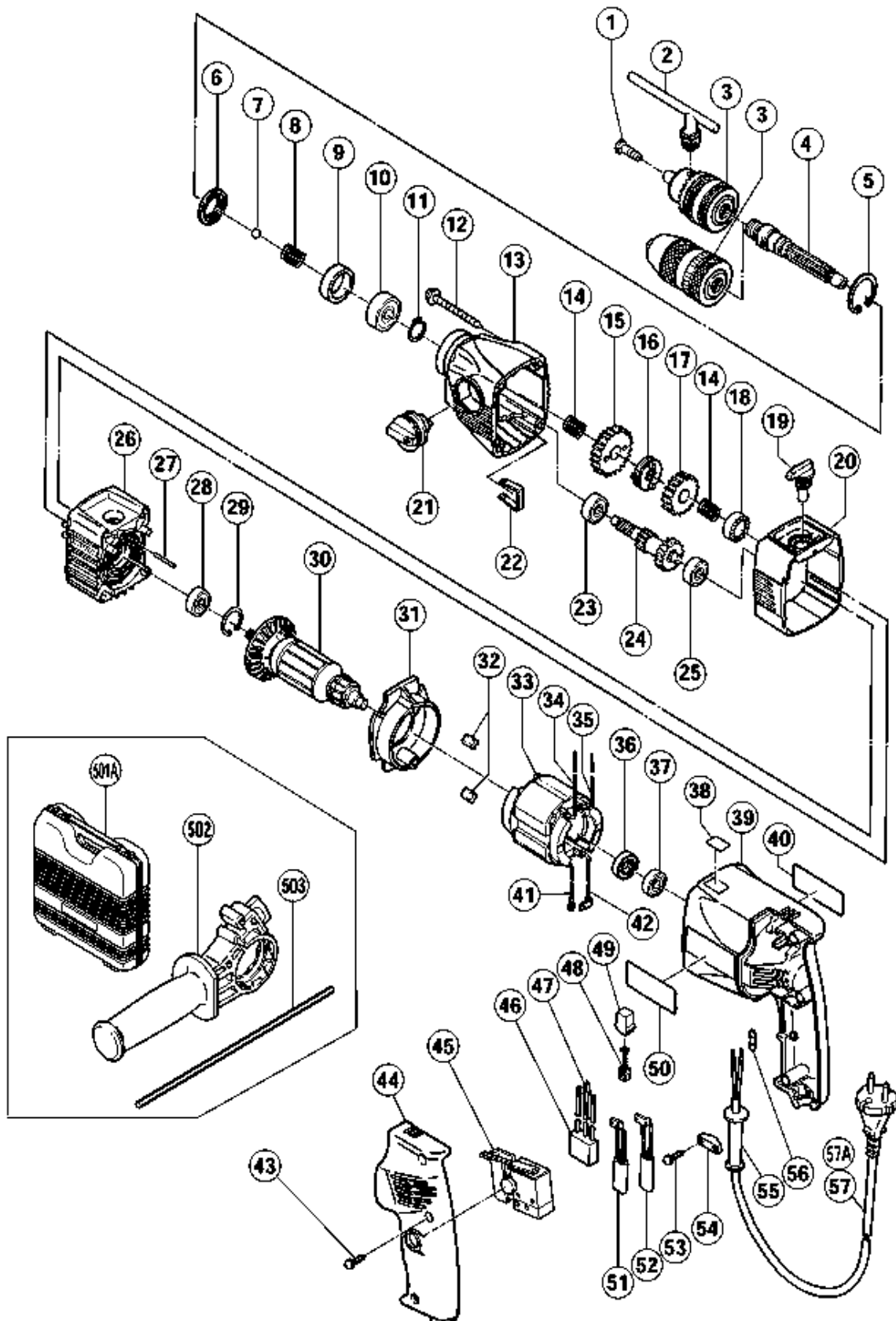


ELECTRIC TOOL PARTS LIST

■ IMPACT DRILL
Model DV 20VB

2002-6-1
(E1-2)



PARTS

DV20VB

ITEM No.	CODE No.	DESCRIPTION	No. USED	REMARKS
* 1	995-344	FLAT HD. SCREW (A) (LEFT HAND) M6X25	1	FOR DRILL CHUCK (W/CHUCK WRENCH)
* 2	930-515	CHUCK WRENCH 10G	1	FOR DRILL CHUCK OF HITACHI
* 2	987-576	CHUCK WRENCH FOR 13VLB-D,13VLR-D	1	FOR DRILL CHUCK OF ROEHM
* 3	950-275	DRILL CHUCK 13VLR	1	INCLUD.2
* 3		DRILL CHUCK(ROEHM)	1	INCLUD.2
* 3	316-280	DRILL CHUCK 13VLN (W/O CHUCK WRENCH)	1	
4	316-274	SPINDLE	1	
5	948-001	RETAINING RING FOR D32 HOLE	1	
6	971-654	DUST SEAL	1	
7	959-150	STEEL BALL D6.35 (10 PCS.)	1	
8	316-275	SPRING (A)	1	
9	316-273	DISTANCE RING	1	
10	600-2DD	BALL BEARING 6002DDCMPS2L	1	
11	939-544	RETAINING RING FOR D15 SHAFT (10 PCS.)	1	
12	305-701	TAPPING SCREW (W/FLANGE) D5X60	4	
13	316-272	GEAR COVER	1	
14	994-389	SPRING	2	
* 15	994-383	LOW SPEED GEAR	1	
16	316-297	CLUTCH DISK	1	
17	994-384	HIGH SPEED GEAR	1	
18	316-277	RATCHET(A)	1	
19	316-270	CHANGE LEVER SET	1	
20	316-269	OUTER COVER	1	
21	316-276	SHIFT LEVER	1	
22	994-396	SHIFT SPRING	1	
23	627-VVM	BALL BEARING 627VVC2PS2L	1	
* 24	316-278	SECOND PINION	1	
25	608-VVM	BALL BEARING 608VVC2PS2L	1	
26	316-268	INNER COVER ASS'Y	1	INCLUD.25,28,29
27	316-271	NEEDLE D2.5X25.8	1	
28	608-DDM	BALL BEARING 608DDC2PS2L	1	
29	939-553	RETAINING RING FOR D22 HOLE (10 PCS.)	1	
* 30	360-474E	ARMATURE 220V-230V	1	
31	314-879	FAN GUIDE ASS'Y	1	INCLUD.32
32	994-343	RUBBER BUSHING	2	
* 33	340-421E	STATOR 220V-240V	1	
34	314-914	INTERNAL WIRE (A) (BLACK)	1	
36	316-785	DUST SEAL	1	
37	608-VVM	BALL BEARING 608VVC2PS2L	1	
38		LABEL(CE-MARK)	1	
39	314-889	HOUSING	1	

*:ALTERNATIVE PARTS

PARTS

DV20VB

ITEM No.	CODE No.	DESCRIPTION	No. USED	REMARKS
40		NAME PLATE	1	
41	314-912	INTERNAL WIRE (A) (RED)	1	
* 42	314-920	INTERNAL WIRE (B) (W/CR UNIT)	1	EXCEPT TPE,INA,SIN,GBR(110V),USA,CHN
43	301-653	TAPPING SCREW (W/FLANGE) D4X20 (BLACK)	3	
44	314-891	HANDLE COVER	1	
* 45	314-916	SPEED CONTROL SWITCH (2P) 100V-115V	1	
* 45	314-921	SPEED CONTROL SWITCH (2P) 220V-240V	1	
* 46	994-273	NOISE SUPPRESSOR	1	EXCEPT TPE,INA,SIN,USA
* 47	302-488	EARTH TERMINAL	1	EXCEPT TPE,INA,SIN,USA
48	999-041	CARBON BRUSH (1 PAIR)	2	
49	955-203	BRUSH HOLDER	2	
50		HITACHI LABEL	1	
* 51	314-922	CHOKO COIL (A) BLUE	1	EXCEPT TPE,INA,SIN,USA
* 52	314-923	CHOKO COIL (A) BROWN	1	EXCEPT TPE,INA,SIN,USA
53	984-750	TAPPING SCREW (W/FLANGE) D4X16	2	
54	937-631	CORD CLIP	1	
55	953-327	CORD ARMOR D8.8	1	
* 56	981-373	TUBE (D)	2	FOR CODE
* 57	500-436Z	CORD	1	FOR GBR(230V)

STANDARD ACCESSORIES

ITEM No.	CODE No.	DESCRIPTION	No. USED	REMARKS
501A	319-659	CASE (PLASTIC)	1	
502	316-279	SIDE HANDLE	1	
503	303-709	DEPTH GAUGE	1	