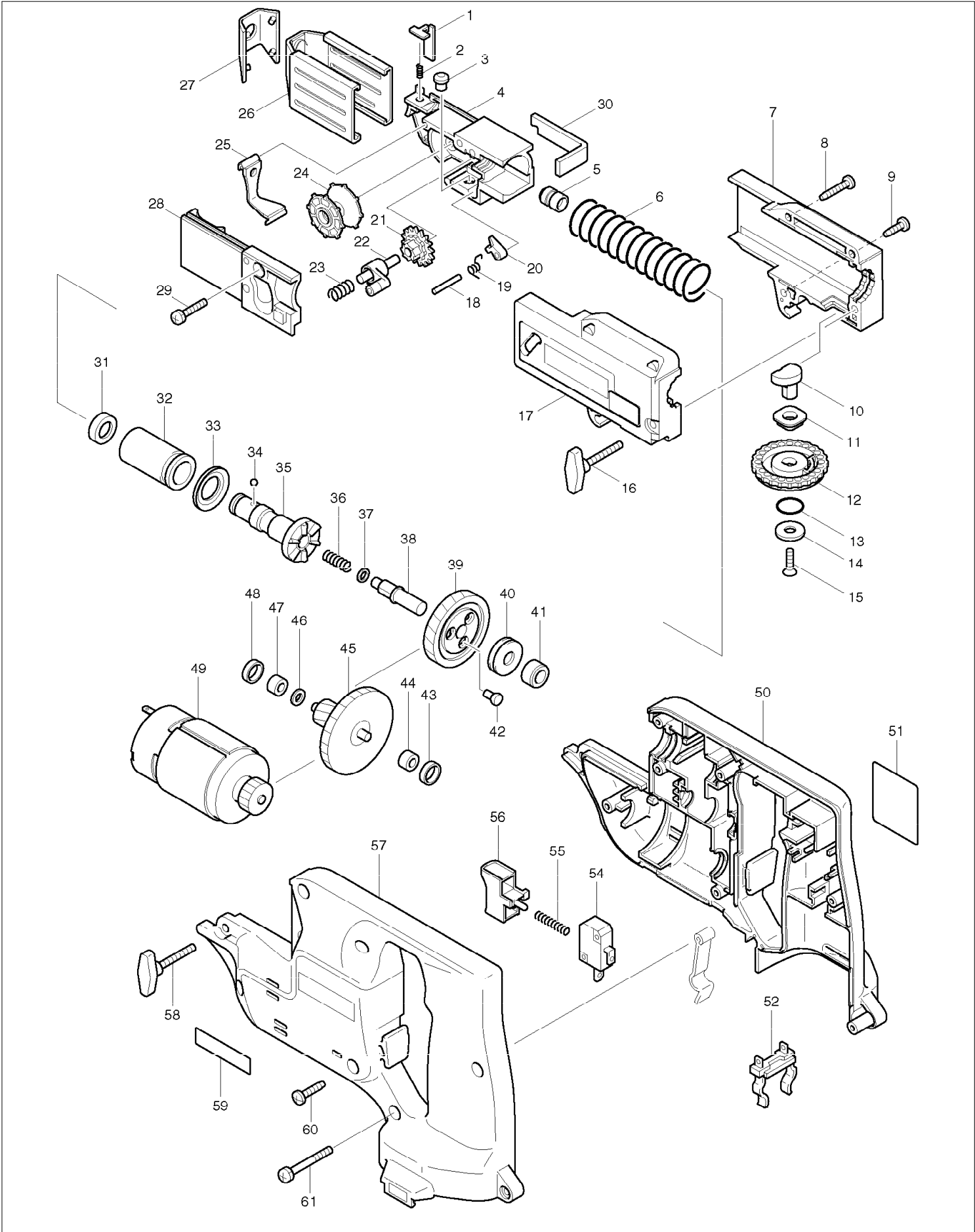


SERVICE DRAWING

MODEL NO. 6835D



SPARE PARTS LIST

MODEL NO. 6835D

ITEM	PART NO.	DESCRIPTION	QTY	NOTE
001	344625-3	LEVER	1	
002	233211-4	COMPRESSION SPRING 2	1	
003	256451-7	PIN 6	1	
004	416500-4	FEEDER BOX	1	
005	*****	*****	***	*****
006	233209-1	COMPRESSION SPRING 21	1	
007	*****	*****	***	*****
008	266045-0	TAPPING SCREW 4X20	2	
009	266020-6	TAPPING SCREW 4X12	1	
010	310091-6	SHIFTER PIN	1	
011	257686-3	SLEEVE 8	1	
012	417056-0	DIAL 42	1	
013	213105-9	O RING 11	1	
014	267201-5	FLAT WASHER 6	1	
015	912117-6	COUNTERSUNK HEAD SCREW M4X12	1	
016	*****	*****	***	*****
017	*****	*****	***	*****
018	256158-5	PIN 3	1	
019	231636-6	TORSION SPRING 4	1	
020	310062-3	STOPPER	1	
021	226344-2	SPUR GEAR 16	1	
022	152580-3	RATCHET ARM COMPLETE	1	
023	233212-2	COMPRESSION SPRING 6	1	
024	416518-5	WHEEL	1	
025	162201-9	DUST COVER	1	
026	344628-7	STOPPER BASE	1	
027	421617-0	CAP	1	
028	152581-1	BOX COVER COMPLETE	1	
029	911133-5	PAN HEAD SCREW M4X18	1	
030	344626-1	PLATE	1	
031	421467-3	DUST COVER	1	
032	214168-8	PLANE BEARING 14	1	
033	421618-8	RING 15	1	
034	216001-0	STEEL BALL 3.5	1	
035	*****	*****	***	*****
036	*****	*****	***	*****
037	*****	*****	***	*****
038	268032-5	PIN	1	
039	*****	*****	***	*****
040	212042-4	THRUST NEEDLE BEARING 821	1	
041	214028-4	PLANE BEARING 8	1	
042	*****	*****	***	*****
043	165115-1	RUBBER SLEEVE 10	1	
044	214017-9	PLANE BEARING 5	1	
045	226813-3	GEAR COMPLETE 16-49	1	
046	253811-4	FLAT WASHER 5	1	
047	214017-9	PLANE BEARING 5	1	
048	165115-1	RUBBER SLEEVE 10	1	
049	629677-8	DC MOTOR 12V	1	
050	*****	*****	***	*****
051	851897-8	NAME PLATE 6835D	1	
052	643909-9	BATTERY HOLDER	1	
054	651891-8	SWITCH V-15-3A6	1	
055	233105-3	COMPRESSION SPRING 4	1	
056	415478-8	SWITCH LEVER	1	
057	*****	*****	***	*****
058	*****	*****	***	*****
059	819080-3	MAKITA LABEL	1	
060	265995-6	TAPPING SCREW 4X18	7	
061	911143-2	PAN HEAD SCREW M4X22	1	
A01	281213-4	HOOK	1	

SPARE PARTS LIST

MODEL NO. 6835D

ITEM	PART NO.	DESCRIPTION	QTY	NOTE
A02	343579-1	SET PLATE	1	
A03	*****	*****	***	*****
A04	*****	*****	***	*****
A05	824551-7	PLASTIC CARRYING CASE	1	
A06	*****	*****	***	*****
B02	152676-0	STOPPER BASE COMPLETE	1	