

Hitachi Power Tools

TECHNICAL DATA AND SERVICE MANUAL

LIST No. E720
May. 2009

PRODUCT NAME

Hitachi Reciprocating Saw

Model CR 13V2

MARKETING OBJECTIVE

The new Model CR 13V2 is a low-priced reciprocating saw for professional use. The new CR 13V2 offers the top cutting performance in its class, as does the Model CR 13V.

The main features of the Model CR 13V2 are as follows:

- (1) Fast cutting speed thanks to high-power motor
- (2) Speed selectable switch trigger
- (3) Tool-less blade detachable mechanism
- (4) Dust- and water- resistant triple-sealing construction

APPLICATIONS

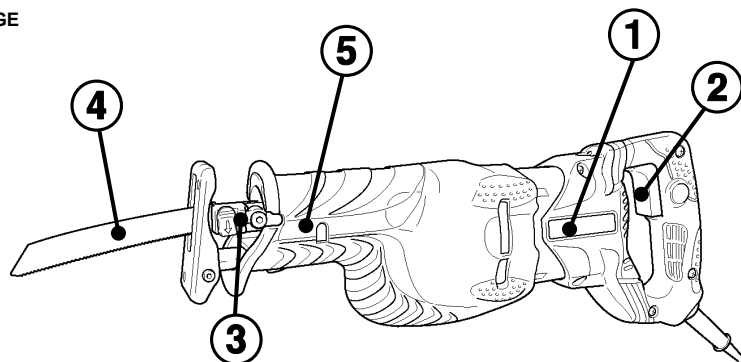
- Cutting pipes and angles
- Cutting or plunge cutting in various types of wooden workpieces
- Cutting various types of metals such as mild steel, aluminum and copper
- Cutting various types of synthetic resin materials such as bakelite and vinyl chloride

SELLING POINTS

[SAME FEATURES AS THE CONVENTIONAL MODELS]

- ① Fast cutting speed thanks to high-power motor
- ② Speed selectable switch trigger
- ③ Tool-less blade detachable mechanism
- ④ Saw blade mountable in either up or down direction
- ⑤ Dust- and water-resistant triple-sealing construction

SPECIFICATIONS AND PARTS ARE SUBJECT TO CHANGE
FOR IMPROVEMENT.



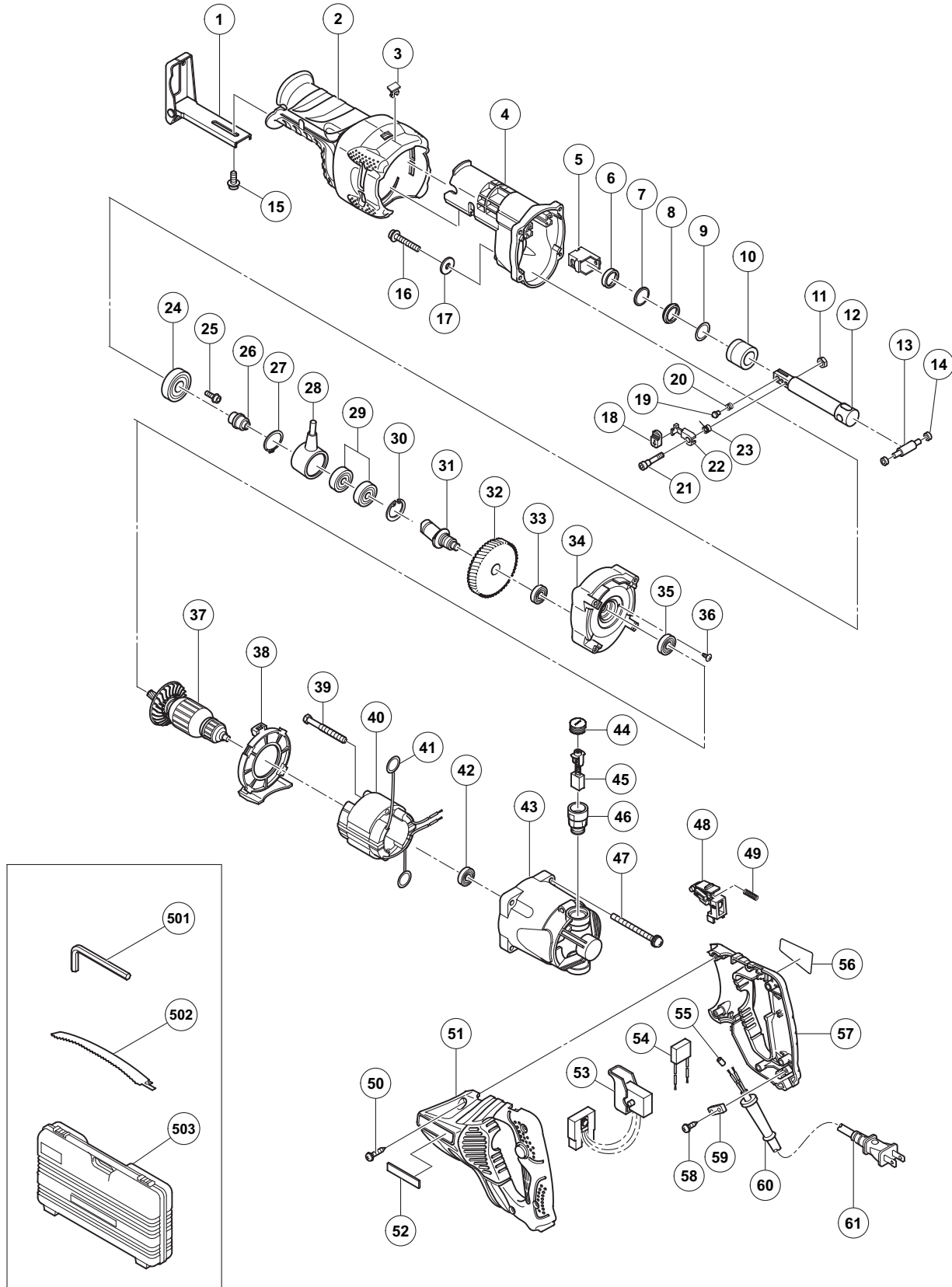
HITACHI

 **Hitachi Koki Co., Ltd.**
International Sales Division

ELECTRIC TOOL PARTS LIST

RECIPROCATING SAW Model CR 13V2

2009·5·26
(E1)



PARTS

CR 13V2

ITEM NO.	CODE NO.	DESCRIPTION	NO. USED	REMARKS
1	330-833	BASE (F)	1	
2	330-821	FRONT COVER (F)	1	
3	330-834	COVER PIN	1	
4	330-818	GEAR COVER (F)	1	
5	326-589	BLADE HOLDER (C)	1	
6	318-458	FELT WASHER	1	
7	321-117	WASHER (H)	1	
8	318-459	V-RING	1	
9	321-118	O-RING	1	
10	321-214	METAL (B)	1	
11	949-566	LOCK NUT M5 (10 PCS.)	1	
12	330-828	PLUNGER (F)	1	
13	330-829	CONNECTOR PIN (F)	1	
14	321-136	SWING ROLLER	2	
15	322-142	NYLOCK BOLT (W/FLANGE) M5 X 12	1	
16	318-451	NYLOCK BOLT (W/FLANGE) M6 X 35	1	
17	318-452	WASHER (G)	1	
18	321-130	CAP	1	
19	321-134	HOLDER PIN (B)	1	
20	318-483	SPRING (B)	1	
21	326-590	SPECIAL BOLT M5	1	
22	326-588	LEVER (C)	1	
23	326-591	BLADE SPRING	1	
24	600-2DD	BALL BEARING 6002DDCMPS2L	1	
25	317-196	NYLOCK BOLT (W/FLANGE) M4 X 12	3	
26	322-119	SUB SHAFT (B)	1	
27	967-261	RETAINING RING FOR D17 SHAFT	1	
28	330-830	RECIPRO PLATE (F)	1	
29	327-694	BALL BEARING 6003VVCM (NYLON RETAINER)	2	
30	939-556	RETAINING RING FOR D35 HOLE (10 PCS.)	1	
31	330-831	SECOND SHAFT (F)	1	
32	330-832	GEAR (F)	1	
33	608-VVM	BALL BEARING 608VVC2PS2L	1	
34	330-819	INNER COVER (F)	1	
35	600-1VV	BALL BEARING 6001VVCMPMS2L	1	
36	314-430	SLOTTED HD. SCREW (SEAL LOCK) M4 X 10	2	
* 37	360-872C	ARMATURE 110V	1	
* 37	360-872U	ARMATURE ASS'Y 120V	1	INCLUD. 35, 42
* 37	360-872E	ARMATURE 220V-230V	1	
* 37	360-872F	ARMATURE 240V	1	
38	330-820	FAN GUIDE (F)	1	
39	953-174	HEX. HD. TAPPING SCREW D5 X 55	2	
* 40	340-751C	STATOR ASS'Y 110V	1	INCLUD. 41
* 40	340-751D	STATOR ASS'Y 120V	1	INCLUD. 41
* 40	340-751E	STATOR ASS'Y 220V-230V	1	INCLUD. 41
* 40	340-751G	STATOR ASS'Y 220V	1	INCLUD. 41 FOR CHN, HKG, KOR, THA
* 40	340-751F	STATOR ASS'Y 240V	1	INCLUD. 41
41	930-703	BRUSH TERMINAL	2	
42	608-VVM	BALL BEARING 608VVC2PS2L	1	
43	330-817	HOUSING	1	

STANDARD ACCESSORIES

CR 13V2

ITEM NO.	CODE NO.	DESCRIPTION	NO. USED	REMARKS
501	944-458	HEX. BAR WRENCH 4MM	1	
* 502	327-129	SABER SAW BLADES NO.341 150L P.14 (3 PCS.)	1	
* 502	318-621	SABER SAW BLADES NO.132 203L (5 PCS.)	1	FOR USA, CAN
503	327-054	CASE	1	

OPTIONAL ACCESSORIES

ITEM NO.	CODE NO.	DESCRIPTION	NO. USED	REMARKS
601	959-610	SABER SAW BLADES NO.1 (5 PCS.)	1	
602	958-182	SABER SAW BLADES NO.2 (5 PCS.)	1	
603	958-183	SABER SAW BLADES NO.3 (5 PCS.)	1	
604	959-611	SABER SAW BLADES NO.4 (5 PCS.)	1	
605	958-185	SABER SAW BLADES NO.5 (5 PCS.)	1	
606	958-188	SABER SAW BLADES NO.8 (5 PCS.)	1	
607	996-427	SABER SAW BLADES NO.9 (3 PCS.)	1	
608	318-611	SABER SAW BLADES NO.101 150L P.10 (5 PCS.)	1	
609	318-612	SABER SAW BLADES NO.102 228L P.10 (5 PCS.)	1	
610	318-613	SABER SAW BLADES NO.103 150L P.14 (5 PCS.)	1	
611	318-614	SABER SAW BLADES NO.104 228L P.14 (5 PCS.)	1	
612	318-617	SABER SAW BLADES NO.107 150L P.24 (5 PCS.)	1	
613	318-618	SABER SAW BLADES NO.108 228L P.24 (5 PCS.)	1	
614	324-818	SABER SAW BLADES NO.109 150L P.18 (5 PCS.)	1	
615	324-819	SABER SAW BLADES NO.110 228L P.18 (5 PCS.)	1	
616	318-619	SABER SAW BLADES NO.121 305L P.6 (5 PCS.)	1	
617	318-620	SABER SAW BLADES NO.131 305L P.10/14(5 PCS.)	1	
618	318-621	SABER SAW BLADES NO.132 203L (5 PCS.)	1	
619	330-852	CUT-OFF GUIDE ASS'Y (L)	1	INCLUD. 620-632
620	996-423	NUT LEVER	1	
621	996-422	CHAIN BOLT	1	
622	996-421	GUIDE BAR	2	
623	996-424	SLIDE PLATE	1	
624	949-755	HEX. SOCKET HD. BOLT M6 X 16 (10 PCS.)	2	
625	321-427	PLATE (B)	1	
626	321-428	BASE SLEEVE	2	
627	949-665	HEX. SOCKET HD. BOLT M5 X 14 (10 PCS.)	2	
628	949-755	HEX. SOCKET HD. BOLT M6 X 16 (10 PCS.)	2	
629	949-425	WASHER M6 (10 PCS.)	2	
630	944-458	HEX. BAR WRENCH 4MM	1	
631	944-459	HEX. BAR WRENCH 5MM	1	
632	330-833	BASE (F)	1	