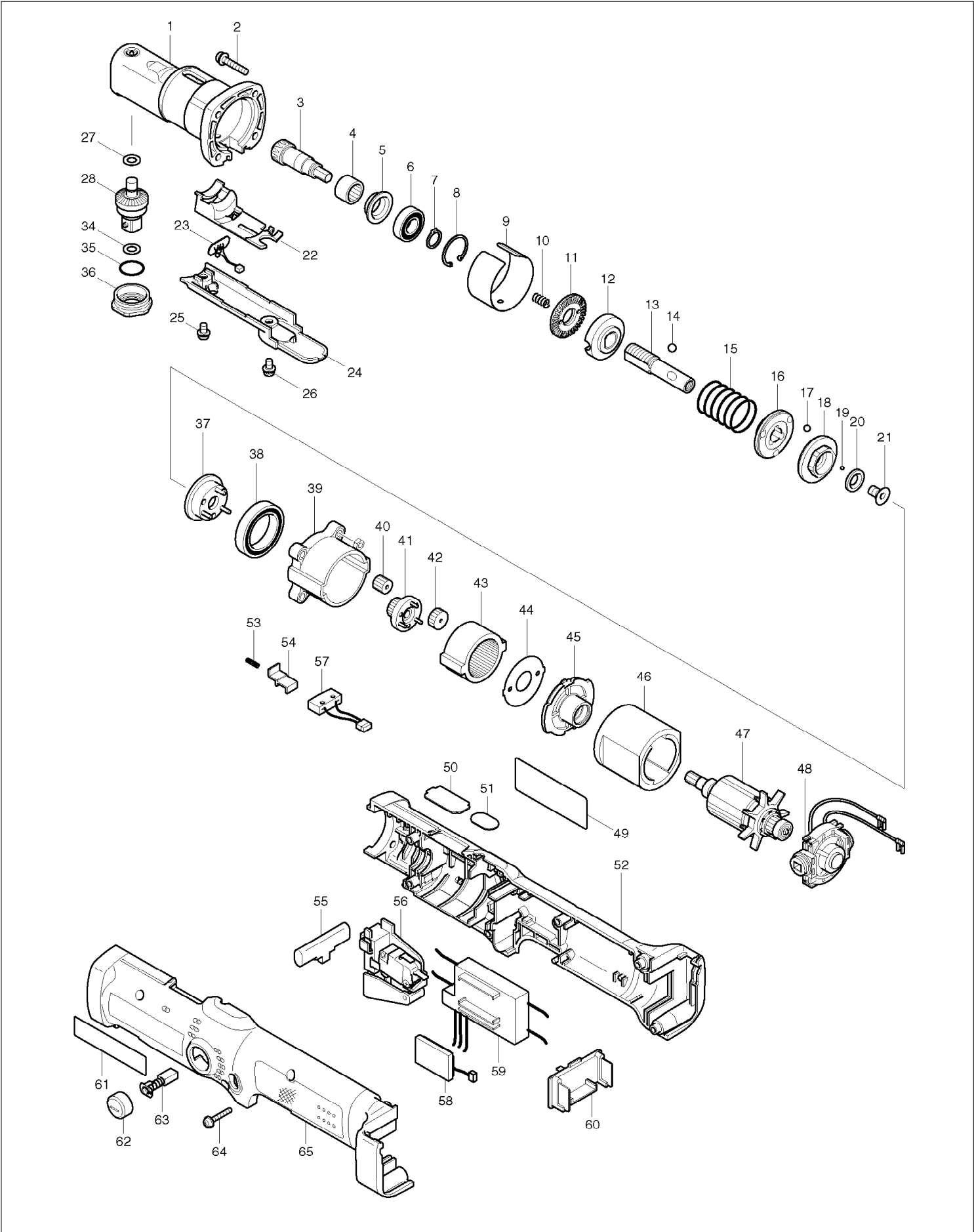


SERVICE DRAWING

MODEL NO. BFL080F



SPARE PARTS LIST

MODEL NO. BFL080F

| ITEM | PART NO. | DESCRIPTION | QTY | NOTE |
|------|----------|---------------------------|-----|-------|
| 001 | 154494-2 | ANGLE HEAD COMPLETE | 1 | |
| 002 | 265145-3 | + PAN HEAD SCREW M4X22 | 4 | |
| 003 | 227469-5 | SPIRAL BEVEL GEAR 9 | 1 | |
| 004 | 212123-4 | NEEDLE BEARING 1210 | 1 | |
| 005 | 345281-2 | SPACER | 1 | |
| 006 | 210057-5 | BALL BEARING 6900LLB | 1 | |
| 007 | 961026-6 | RETAINING RING S-10 | 1 | |
| 008 | 962112-6 | RETAINING RING R-22 | 1 | |
| 009 | 345285-4 | RING 38A | 1 | |
| 010 | 233019-6 | COMPRESSION SPRING 5 | 1 | |
| 011 | ***** | ***** | *** | ***** |
| 012 | ***** | ***** | *** | ***** |
| 013 | 324296-2 | SPINDLE | 1 | |
| 014 | 216018-3 | STEEL BALL 5.0 | 3 | |
| 015 | 233356-8 | COMPRESSION SPRING 19A | 1 | |
| 016 | 223140-9 | CAM B | 1 | |
| 017 | 216024-8 | STEEL BALL 4 | 3 | |
| 018 | 223139-4 | CAM A | 1 | |
| 019 | 216019-1 | STEEL BALL 3 | 13 | |
| 020 | 267247-1 | FLAT WASHER 7 | 1 | |
| 021 | 266305-0 | TORX C.S HEAD SCREW M5X10 | 1 | |
| 022 | 418011-5 | LIGHT HOLDER | 1 | |
| 023 | 631513-6 | LED CIRCUIT | 1 | |
| 024 | 418005-0 | LIGHT COVER | 1 | |
| 025 | ***** | ***** | *** | ***** |
| 026 | ***** | ***** | *** | ***** |
| 027 | 253726-5 | FLAT WASHER 6 | 1 | |
| 028 | ***** | ***** | *** | ***** |
| 034 | 253842-3 | FLAT WASHER 14 | 1 | |
| 035 | 213162-7 | O RING 14 | 1 | |
| 036 | 285707-1 | BEARING RETAINER 14-23 | 1 | |
| 037 | 153443-6 | CARRIER COMPLETE A | 1 | |
| 038 | 211375-4 | BALL BEARING 6805LLB | 1 | |
| 039 | 418004-2 | GEAR CASE | 1 | |
| 040 | 227050-2 | SPUR GEAR 13 | 3 | |
| 041 | 153445-2 | SPUR GEAR 20 COMPLETE A | 1 | |
| 042 | 227049-7 | SPUR GEAR 18 | 3 | |
| 043 | 227048-9 | INTERNAL GEAR 47 | 1 | |
| 044 | 267774-8 | LOCK WASHER | 1 | |
| 045 | 418003-4 | MOTOR BRACKET | 1 | |
| 046 | 638183-2 | YOKE UNIT | 1 | |
| 047 | 619094-0 | ARMATURE | 1 | |
| 048 | 687138-4 | ENDBELL COMPLETE | 1 | |
| 049 | 853877-0 | BFL080F NAME PLATE | 1 | |
| 050 | 345402-6 | PLATE A | 1 | |
| 051 | 418001-8 | LENS | 1 | |
| 052 | 183509-8 | HOUSING SET INC. 61,65 | 1 | |
| 053 | 233025-1 | COMPRESSION SPRING 2 | 1 | |
| 054 | 418002-6 | SWITCH LEVER | 1 | |
| 055 | 417511-2 | F/R CHANGE LEVER | 1 | |
| 056 | 650536-5 | SWITCH C3Z-5-01 | 1 | |
| 057 | 638184-0 | SWITCH UNIT | 1 | |
| 058 | 631514-4 | BUZZER CIRCUIT | 1 | |
| 059 | 631511-0 | CONTROLLER | 1 | |
| 060 | 643800-1 | TERMINAL | 1 | |
| 061 | 819003-1 | MAKITA LABEL | 1 | |
| 062 | 643933-2 | BRUSH HOLDER CAP | 2 | |
| 063 | 193466-2 | CARBON BRUSH CB-434 | 1 | |
| 064 | 265095-2 | PAN HEAD SCREW M3X20 | 6 | |
| 065 | 183509-8 | HOUSING SET | 1 | |

SPARE PARTS LIST

MODEL NO. BFL080F

| ITEM | PART NO. | DESCRIPTION | QTY | NOTE |
|------|----------|-------------------------------|-----|-------|
| 066 | 125189-4 | INC. 52,61 GEAR ASSEMBLY A | 1 | |
| 067 | ***** | INC. 37-45 ***** | *** | ***** |